

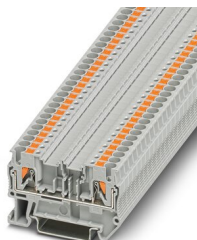
# PTC 2,5-MTD - Feed-through terminal block



3270106

<https://www.phoenixcontact.com/pc/products/3270106>

Please be informed that the data shown in this PDF document is generated from our online catalog. Please find the complete data in the user documentation. Our general terms of use for downloads are valid.



Feed-through terminal block, nom. voltage: 400 V, nominal current: 24 A, number of connections: 2, connection method: Push-in connection, 1 level, Rated cross section: 2.5 mm<sup>2</sup>, cross section: 0.14 mm<sup>2</sup> - 4 mm<sup>2</sup>, mounting type: NS 35/7,5, NS 35/15, color: gray

## Your advantages

- The Push-in connection terminal blocks are characterized by the system features of the CLIPLINE complete system and by easy and tool-free wiring of conductors with ferrules or solid conductors
- The compact design and front connection enable wiring in a confined space
- In addition to the testing option in the double function shaft, all terminal blocks provide an additional test pick-off
- Tested for railway applications

## Commercial data

Item number	3270106
Packing unit	50 pc
Minimum order quantity	1 pc
Product key	BE2211
Catalog page	Page 74 (C-1-2019)
GTIN	4046356960595
Weight per piece (including packing)	7.235 g
Weight per piece (excluding packing)	6.2 g
Customs tariff number	85369010
Country of origin	CN